

FOUNDATION COLLECTION

BY MORRIS BLACK & SONS

Multi-Family Cabinetry Solutions



Morris Black

Building on Trust since 1908



A Legacy Built on Trust

The story of Morris Black & Sons begins not in factories or showrooms, but with a family in search of possibility. In 1898, a Jewish family from the western territories of the Russian Empire settled in Pennsylvania's Lehigh Valley, bringing with them resilience and hope for a better future. Among them was an eleven-year-old boy named Morris Black, whose determination and quiet work ethic would one day define a century of American entrepreneurship and business leadership.



Morris Black

In 1908, at just twenty-one, Morris purchased a wagon and team of horses and began delivering building materials to local job sites. What began as a single horse-and-buggy route quickly became a trusted name — a symbol of reliability and integrity in a thriving region. When others hesitated, Morris showed up. When challenges arose, he adapted. Through the Great Depression and two World Wars, his company and name endured — adding new products, warehousing, and services to meet the needs of a changing world.

By the post-war years, Morris Black & Sons had evolved into a full-scale supplier and manufacturer embracing innovation while holding fast to the values that defined its beginnings: excellence, honesty, and trust. Each generation since has carried that same instinct and culture to evolve and pivot, navigating recessions, embracing new technologies, and expanding into cabinetry, design, and millwork.



Morris Black & Sons, circa 1935

Today, more than a century later, the **Foundation Collection by Morris Black & Sons** continues that legacy. Designed specifically for the multi-family housing and commercial markets, it blends the timeless integrity of traditional craftsmanship and design with the efficiencies and precision of modern manufacturing. Every cabinet reflects the collaboration of our team of designers, craftsmen, and cabinetmakers, all dedicated to that same legacy of excellence and trust ... and **built for the way people live and work today.**

FOUNDATION COLLECTION

BY MORRIS BLACK & SONS

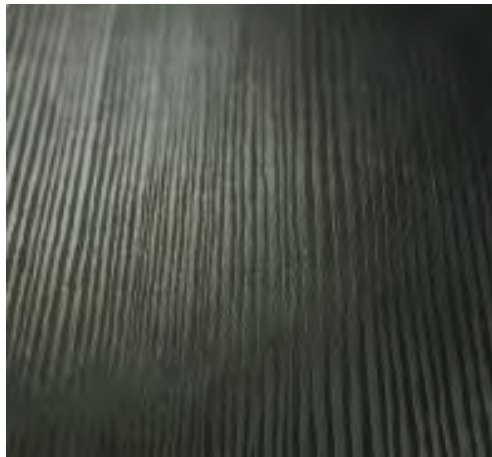
The Foundation Collection color and texture palettes are designed and selected for the modern spaces of multi-family housing. Included are options with natural wood tones and embossing characteristics resembling real wood textures, in addition to a range of solid colors. Each option within the palettes embodies exceptional durability.

TEXTURE PALETTE	COLOR PALETTE	COLORS
Linear	Essential Series	Valley Orchard Elm Bleached Walnut Harvest Morning Fog Grey
Synchronized	Elevate Series	Formosa Reserve Morning Elm Deep Elm Marrone Vineyard Walnut Black Elm Luxe
Matte	Timeless Series	Mirage Stone Lehigh Evergreen Slate Haven Deep Midnight Valley Concrete Limestone White

Texture Palette

Presenting 3 texture options, each associated with its own unique color palette.

Linear



Color Palette Series: Essential

The Linear texture features an embossed pattern reminiscent of wood grain, maintaining a consistent tactile quality across all wood grain designs. Although it does not precisely match the specific wood grain pattern, it adds a distinctive depth and character to the surface.

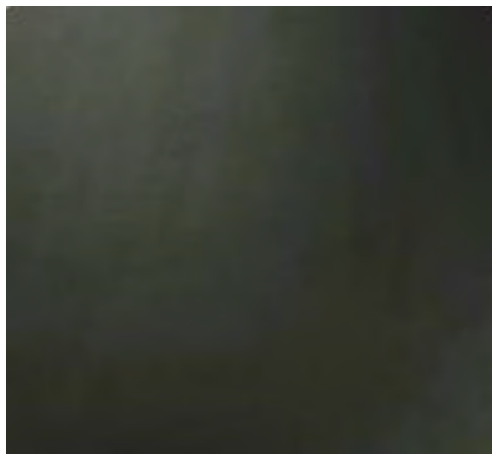
Synchronized



Color Palette Series: Elevate

The Synchronized texture features a wood grain embossing that precisely aligns with and mirrors the printed grain pattern. This imparts a rich, tactile depth, creating an authentic look and feel reminiscent of natural wood.

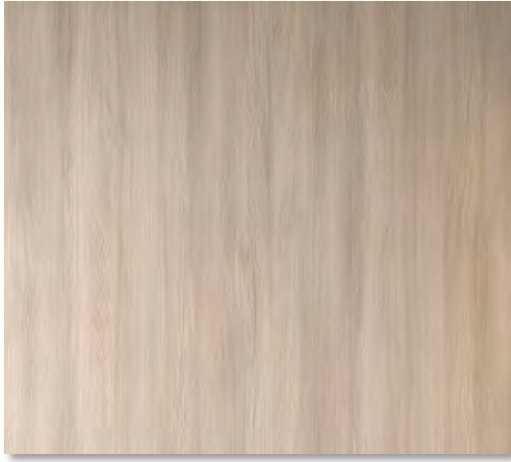
Matte



Color Palette Series: Timeless

The Matte finish is a smooth clean finish that does not contain any texture. This finish is best suited for use with solid colors.

Color Palette – Essential Series

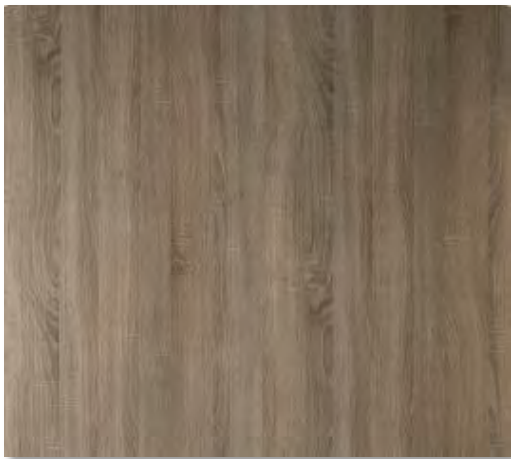


Valley Orchard Elm

Color Palette: *Essential*

Texture/Embossing: *Linear*

Light warm elm wood-grain; versatile, timeless.



Bleached Walnut Harvest

Color Palette: *Essential*

Texture/Embossing: *Linear*

Pale walnut; soft warmth, brightens spaces.



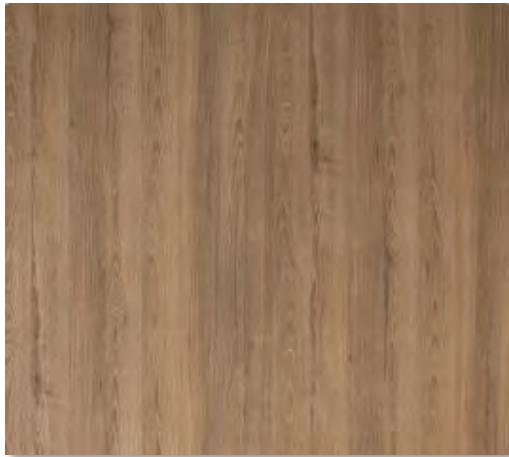
Morning Fog Grey

Color Palette: *Essential*

Texture/Embossing: *Linear*

Muted warm-grey wood-grain; easy to pair.

Color Palette – Elevate Series

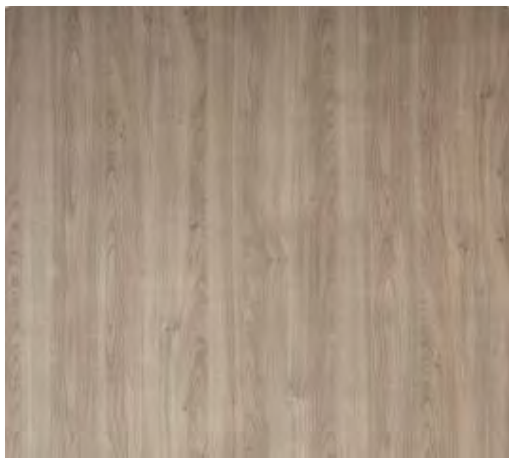


Formosa Reserve

Color Palette: *Elevate*

Texture/Embossing: *Synchronized*

Mid-tone wood-grain; premium tactile realism.

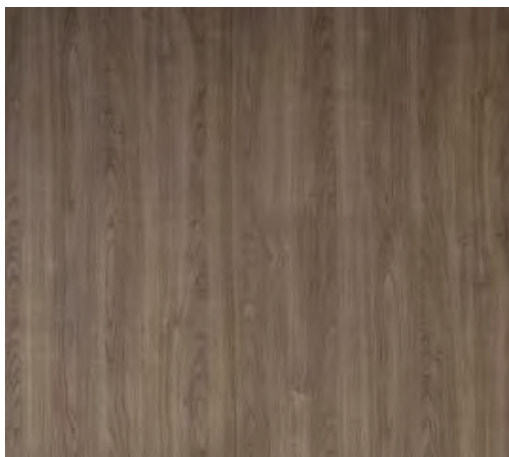


Morning Elm

Color Palette: *Elevate*

Texture/Embossing: *Synchronized*

Hazy, light elm; warm glow.



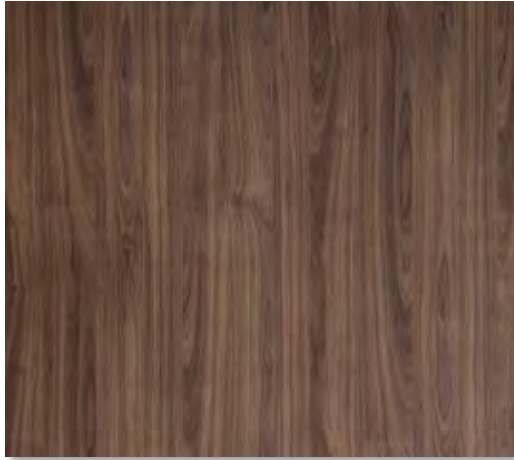
Deep Elm

Color Palette: *Elevate*

Texture/Embossing: *Synchronized*

Refined shadows, warm elm; rich glow.

Color Palette – Elevate Series



Marrone Vineyard Walnut

Color Palette: *Elevate*

Texture/Embossing: *Synchronized*

Rich walnut; deep grain for an upscale feel.



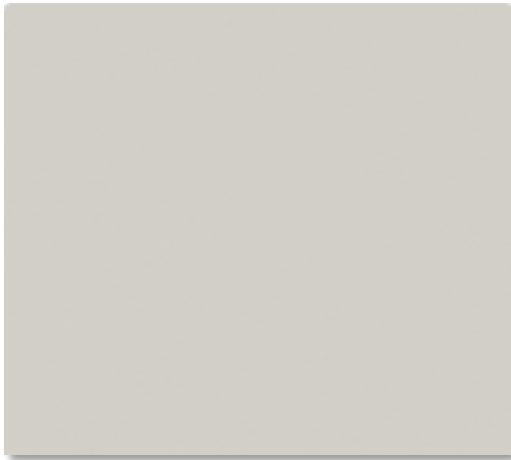
Black Elm Luxe

Color Palette: *Elevate*

Texture/Embossing: *Synchronized*

Rich dark elm; elegant, refined.

Color Palette – Timeless Series



Mirage Stone

Color Palette: *Timeless*

Texture/Embossing: *Smooth/Matte*

Warm matte neutral with gentle green-grey undertones — sophisticated and modern, ideal for two-tone cabinetry or amenity spaces.



Lehigh Evergreen

Color Palette: *Timeless*

Texture/Embossing: *Smooth/Matte*

Muted evergreen hue inspired by natural palettes and biophilic design. Adds subtle richness.



Slate Haven

Color Palette: *Timeless*

Texture/Embossing: *Smooth/Matte*

Soft, warm-matte stone grey with timeless neutrality. A balanced tone that complements woodgrains or stands on its own.

Color Palette – Timeless Series



Deep Midnight

Color Palette: *Timeless*

Texture/Embossing: *Smooth/Matte*

Deep blue with sophisticated tones. Unique and elegant tone ideal for a contrast color or feature spaces.

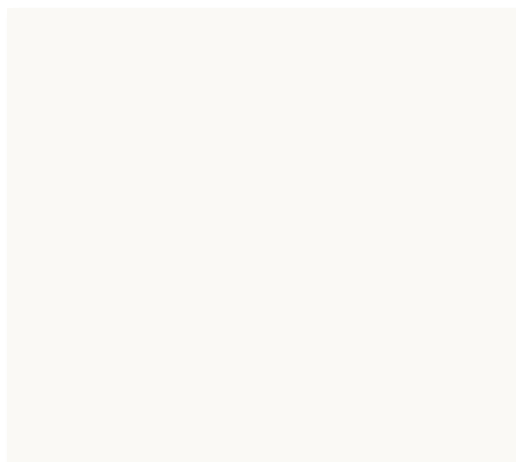


Valley Concrete

Color Palette: *Timeless*

Texture/Embossing: *Smooth/Matte*

Soft grey with earth undertones. A warm and natural color that blends and nicely complements other color palettes.



Limestone White

Color Palette: *Timeless*

Texture/Embossing: *Smooth/Matte*

Bright and balanced with the clean simplicity of modern architecture. Naturally blends with every texture in the Foundation Collection palette. Designed for versatility, this tone offers the perfect neutral base.

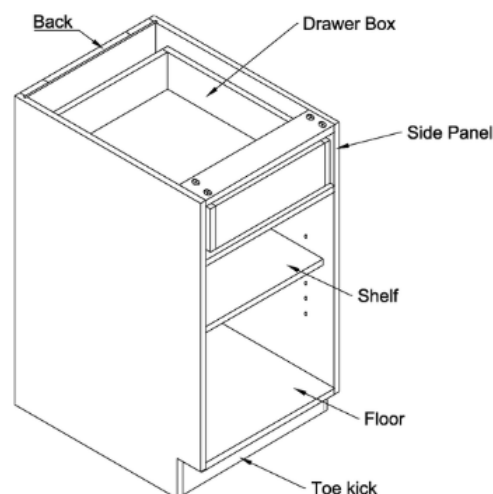
Standard Cabinet Construction

Every cabinet in the Foundation Collection represents over a century of craftsmanship refined for today's multi-family housing and commercial environments. Each detail — down to the joinery and hardware — has been thoughtfully engineered to balance performance, appearance, and value.

Precision Frameless Construction

Built with clean European lines, the Foundation Collection cabinet system utilizes 5/8" industrial-grade furniture board with precision doweled joinery. This frameless design maximizes interior storage while maintaining tight reveals and a modern, architectural aesthetic.

- **Material:** 5/8" white melamine furniture board.
- **Joinery:** Fully doweled casework for superior squareness and strength.
- **Back Panel:** 1/4" engineered panel, dadoed into back panel for squareness and structural integrity.
- **Nailers:** Dual 5/8" melamine nailers provide mounting integrity.
- **Edgebanding:** 1 mm matching white PVC edge — durable, seamless, and clean.



Functional Design — Thoughtfully Engineered Details

- **Doors & Fronts:** 3/4" slab-style fronts fabricated from thermally fused laminate (TFL) over furniture board core (particleboard). Premium surface options with matching 1 mm edge banding.
- **Drawers:** 5/8" white melamine box with epoxy side-mount slides.

Applied Finished Ends — Modern European Appeal

In place of integrated finished panels, the Foundation Collection uses applied finished ends, a hallmark of contemporary European cabinetry. These ends create a seamless transition with a finished or built-in look.

Decorative Hardware

Hardware pulls/knobs are priced as specified. Pre-drilling doors and drawer fronts are included at no additional cost.

Upgrade Package

For multi-family housing and commercial developments that demand elevated performance and aesthetic refinement, the Foundation Collection Upgrade Package delivers advanced materials and hardware options while increasing the feel and functionality of the standard line. Selection of this package includes all features, materials and construction included here.

Upgraded Drawer Box

- **Material:** ½" UV-finished plywood box with butt-joint assembly.
- **Finish:** Clear UV-coated for superior durability.



Upgraded Drawer Slides

- **Slides:** Full-extension soft-close undermount glides. Integrated dampening system ensures smooth motion and long-term reliability. Overbuilt, strong slides with exceptionally smooth operation.



Soft-Close Hardware

- **Hinges:** 110° nickel-finish, integrated soft-close hinges provide quiet, controlled closure. Provides a quiet, no slam feature with a luxury feel.



Technical Product Specifications

Core Materials

All casework and cabinet components in the Foundation Collection are engineered using 5/8" industrial-grade particleboard that complies with **CARB Phase II and TSCA Title VI** formaldehyde emission standards, as regulated under EPA 40 CFR Part 770. The substrate meets the requirements of **ANSI A208.1** – Particleboard for physical properties, thickness, and density classification. Panels are surfaced with premium thermally fused laminate (TFL) finishes manufactured under **ANSI A208.2** specifications for decorative laminate panels.

Hardware & Functional Components

All hinges, drawer slides, and mounting hardware conform to **ANSI/BHMA A156.9** – Cabinet Hardware Standards. This includes testing for up to 50,000 open/close operations without mechanical failure, corrosion resistance in accordance with **ASTM B117**, and load testing to **ANSI/BHMA A156.9 Sections 4 & 5**. Soft-close systems are verified to maintain damping integrity throughout standard service life cycles.

Manufacturing Integrity

Cabinet assemblies are produced in our **Architectural Woodwork Institute (AWI) Certified manufacturing facility in the USA**. TFL and Melamine surfaces are tested for surface wear resistance, and moisture tolerance. All joiners use 8 mm solid wood precision dowel construction, delivering square, load-bearing alignment consistent with industry standard mechanical test benchmarks.

Sustainability & Health Compliance

Every Morris Black & Sons cabinet component is sourced from certified CARB Phase II and TSCA Title VI suppliers. Production materials and finishes are manufactured under EPA-registered programs ensuring formaldehyde emissions ≤ 0.09 ppm (particleboard) and ≤ 0.11 ppm (MDF). The Foundation Collection supports **LEED v4 EQ Credit 2** – Low-Emitting Materials, contributing to healthier indoor environments in multi-family housing projects.

Why This Matters

For Architects, Designers, and General Contractors, verified compliance means fewer submittal delays, smoother inspections, and long-term client confidence. The Foundation Collection provides a solid platform of trust combining integrity, proven durability, and aesthetic excellence in one cabinet system.



All product specifications are subject to continuous improvement. Updated compliance certifications available upon request.

5-Year Limited Warranty

Coverage Summary

Morris Black & Sons warrants its Foundation Collection cabinetry and related casework products to be free from defects in materials and craftsmanship under normal residential and commercial use for a period of five (5) years from the date of original installation or delivery.

This warranty applies to all cabinet boxes, doors, drawer fronts, and hardware manufactured by Morris Black & Sons when properly installed, maintained, and used in accordance with intended design and environmental conditions.

What Is Covered

This limited warranty covers workmanship defects including joinery, assembly, and edge bonding; material integrity of the cabinet case, drawer boxes, and finished surfaces; hardware performance such as hinges, slides, and adjustment mechanisms meeting ANSI/BHMA standards; and finish and laminate adhesion under normal environmental exposure.

Products installed by Morris Black & Sons, including labor and materials related to warranted items are fully covered within the scope of this warranty.



What Is Not Covered

This warranty does not cover damage or defects caused by abuse, neglect, accident, or misuse; improper storage, handling, or cleaning (including harsh chemical exposure); normal wear and tear including minor scratches, finish fading, or surface variations; environmental factors such as excessive moisture, humidity, heat, or direct sunlight; alterations or field modifications not performed or authorized by Morris Black & Sons; or structural movement that impact cabinet alignment or integrity.

Installed-By-Morris Black vs. Third-Party Installation

- **When installed by Morris Black & Sons:** The full five-year limited warranty applies to materials, craftsmanship, and installation workmanship. Any warranted item that fails under normal use will be repaired or replaced by Morris Black & Sons at no charge within the warranty period.
- **When Installed by Others:** The warranty applies only to materials and craftsmanship of the manufactured product. Any defects, damages, or failures resulting from improper installation, adjustment, or site conditions are excluded. Installation by non-authorized parties may void this warranty at the discretion of Morris Black & Sons.

Limitations & Remedies

This warranty is limited to the original purchaser and is non-transferable. Liability under this warranty is restricted solely to repair or replacement of defective product components. Morris Black & Sons shall not be liable for incidental or consequential damages, including costs related to removal, reinstallation, or loss of use.

To File a Claim

Warranty claims must be submitted in writing within the warranty period, accompanied by proof of purchase and project details. Inspection and verification will be conducted by a Morris Black & Sons representative before any service or replacement is authorized.

Statement of Integrity

Every Foundation Collection cabinet reflects more than a century of Integrity and the enduring promise of quality. Our limited warranty reinforces that commitment, ensuring each product performs beautifully for years to come.

*All product specifications and warranties are subject to continuous improvement.
For the most current information, contact Morris Black & Sons directly.*

Why Partners Trust Our Multi-Family Expertise

Modern multi-family solutions backed by a foundation of reliability and engineered performance.

- **Manufactured Locally**

The Foundation Collection is proudly built in Lehigh Valley, Pennsylvania, using lean manufacturing systems that ensure higher quality, fewer defects and reliable on-time performance — all while supporting the local economy.

- **Rapid Response & Support**

The Morris Black & Sons team delivers prompt action on field issues, damages, and change requests to keep trades moving smoothly and help avoid costly delays.

- **Flexible Design Solutions**

Our customized approach offers complete flexibility to meet architectural specifications, unique conditions, and project-specific design goals.

- **Value Across All Project Classes**

From mixed-use developments and luxury condominiums to market-rate apartments and affordable housing, we provide pricing options that align with budget goals while maintaining exceptional quality and durability.

- **Modern, Market-Relevant Design**

Each element in the Foundation Collection is thoughtfully crafted to reflect current European and contemporary design trends to support rent-growth strategies and optimize consumer attraction.

- **A Legacy of Trust**

For 118 years, our multi-generational family business has upheld a strong commitment to craftsmanship, integrity, and standing behind every product we make.

- **Engineered for Multi-Family Demands**

The Foundation Collection is crafted with commercial-grade materials and build standards designed to withstand high-use environments and long-term occupancy cycles.

- **Direct Access to Our Design Experts**

Our in-house design experts are specialized to collaborate with your designers, architects, and developers to streamline coordination, provide solutions quickly, offer thoughtful value engineering options, and ensure efficient project execution.

Contact Us

Building on Trust Since 1908

Nestled in the heart of the Northeast Corridor, **Morris Black & Sons** is strategically located in **Allentown, Pennsylvania**, a short distance from **Philadelphia, New York City** and within reach of **Washington, D.C.** and the entire Mid-Atlantic region. This central location allows us to serve clients across the Northeast quickly and efficiently, from large-scale multi-family housing projects to custom commercial and residential interiors.



Our Facility

At our **state-of-the-art manufacturing and design campus**, we bring together:

- **On-site manufacturing** using advanced European cabinet technology and precision dowel construction.
- **Full-service design studio** featuring kitchen and bath displays, material samples, and collaborative workspaces.
- **Dedicated engineering, project management** and installation teams focused on delivering quality and consistency from concept through completion.

Partner With Us

Whether you're a **Developer, Contractor, Architect, or Design Professional**, the Morris Black team provides a turn-key integrated solution — design, build, and delivery. We are grounded in craftsmanship and efficiency, focused on solutions while driving on-time and complete deliveries.



Morris Black & Sons

984 Marcon Blvd.

Allentown, PA 18109

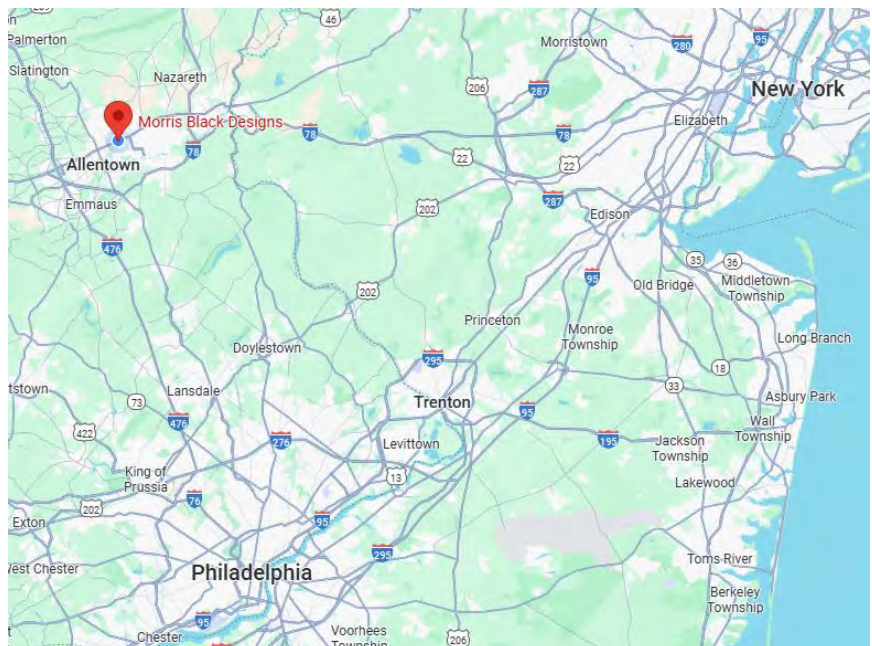
610-264-2700

www.morrisblackinc.com



Google Plus Code:

JHV6+3H Allentown, Pennsylvania



Foundation Collection
2026 Edition



610-264-2700

www.morrisblackinc.com

1st Edition | Copyright ©2026 Morris Black & Sons, Inc. All rights reserved.